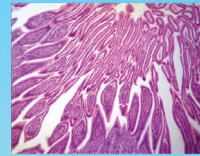
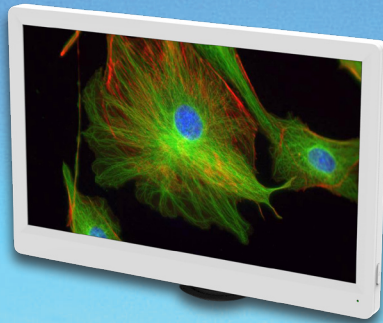




LABOMED, INC.



LC-19 LCD HDMI Digital Camera (11.6", 6.0MP, 30fps)

LC-19 LCD HDMI Digital Camera (11.6", 6.0MP, 30fps) is a brand new high performance and highly cost-effective, super reliable HD LCD camera which combines a full HD camera and a retina HD LCD screen.

With the built-in software, the **LC-19 LCD HDMI Digital Camera (11.6", 6.0MP, 30fps)** can be controlled by a mouse to take pictures, take videos and do simple measurement. Equipped with Sony COMS sensor and 11.6" retina HD LCD screen, it is developed specifically for different microscopy applications.



LABOMED, INC.

APPLICATION

LC-19 LCD HDMI Digital Camera (11.6", 6.0MP, 30fps) can be widely used in medical diagnosis, industrial production and inspection, laboratory research and related microscopy field for image, video capture and analysis. With the high image quality and easy to operate, it will be your best assistant.

1. Live Cell Imaging
2. Surgical Microscopic Imaging
3. Pathology
4. Cytology
5. Defect Analysis
6. Semiconductor Inspection
7. Navigation for Processed Imaging
8. Industrial Optical HD Digital Imaging
9. Astronomical Observation

FEATURES

1. Control camera with mouse from USB port, no shaking.
2. 11.6" retina HD LCD Screen, high definition and high quality color reproduction.
3. 6.0MP still image capture and 1080P Video Recording.
4. Save image and video to SD card.
5. HDMI Output from the camera to the LCD screen, frame rate up to 60fps.
6. Also can be connected to PC and take picture, take video, do measurement and analyze images.
7. Standard C-mount Interface for different microscopes.
8. Measurement function. When it is connected to LCD monitor, **LC-19 LCD HDMI Digital Camera (11.6", 6.0MP, 30fps)** has complete measurement function when it is connected to LCD monitor.





LABOMED, INC.

SPECIFICATION

Model	LC-19
Image Sensor	CMOS, Sony IMX236 Chip Size 1/2.8"
Video Resolution	1920 × 1080
Captured Image Resolution	3264 × 1836 on SD card to LCD monitor, 1920 × 1080 and 3264 × 1836 with software to PC
Frame Rate	1920 × 1080 30fps via USB2.0 1920 × 1080 60fps via HDMI
Data Record	High speed SD Card (8G)
Video Record	1080p 30fps in SD Card 1080p 30fps in PC
Scan Mode	Progressive
Electronic Shutter	Electronic Rolling Shutter
A/D conversion	8 bit
Color Depth	24bit
Sensitivity	510mV
Dynamic Range	68dB
S/N ratio	52dB
Exposure time	0.001 sec ~ 10.0 sec
Exposure	Auto/Manual
White balance	Auto
Settings	Gain, Gamma, Saturation, Contrast, scale bar function

Measurement Function when connected to LCD Monitor

Complete measurement function, including Anchor Point, Line, Freehand Line, Rectangle, Circle, Polygon, Point-line Distance, Concentric Circles, Bicircle, Angle etc.

PC software TCCapture



LABOMED, INC.

Output model 1

Output model 2
System Compatible
Optical port
Power Supply
Operational Temperature
Humidity 45%-85%

Storage Temperature
Retina Screen Size
Aspect Ratio
Display Resolution
Display Type
Brightness
Static Contrast Ratio
Input
Power Supply
Dimension
Net Weight

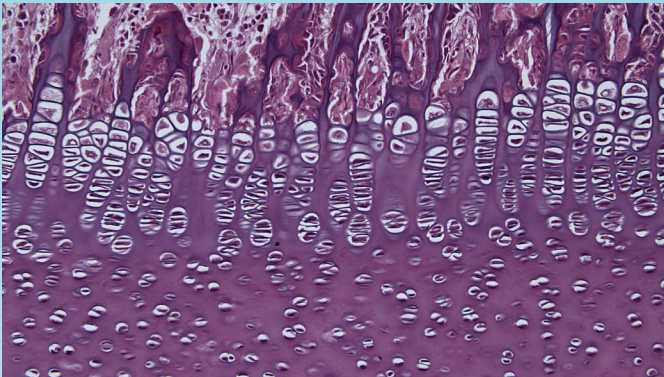
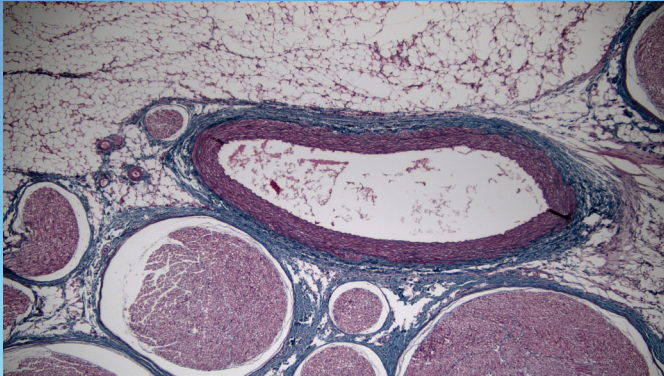
USB2.0

HDMI
Windows XP/Vista/Win 7(32 and 64-bit),MAC OSX
C- Mount
DC 12V /2A
0-60°C
-20-70°C
11.6 inch
0.672916667
1920 × 1080
IPS-Pro
320cd/m2
41.66736111
1*HDMI Port
DC 12V /2A External Adapter
282mm×180.5mm×15.3mm
600g



LABOMED, INC.

SAMPLE IMAGES





LABOMED, INC.

